



INTRODUCING A
RANGE OF SUSTAINABLE
NEW HOMES AT JAHAMA
HIGHLAND ESTATES

Dreathan Donn
WREN

Guilbneach
CURLEW

Iolaire
EAGLE

www.jahamahighlandstates.com



THREE BESPOKE DESIGNS THAT REFLECT THE NATURE OF OUR INSPIRING LANDSCAPE



Dreathan Donn
WREN

1 Bedroom Bothy



Guilbneach
CURLEW

2 Bedroom Bungalow



Iolaire
EAGLE

3 Bedroom House



WE ARE DELIGHTED TO PRESENT THREE DESIGNS FOR NEW BUILD HOMES ON JAHAMA HIGHLAND ESTATES

Our designs are the result of well over a year's worth of research and development, part of our ongoing commitment to provide additional housing on our landholding.

Designed in a West Coast vernacular architectural style to fit in with and to enhance the landscape, the houses will be sustainable both in build type and maintenance and running costs. Featuring ground or air source heat pumps, mechanical ventilation and heat recovery, and excellent insulation, residents of our new houses will find the properties comfortable and economic to run.

Every house will have a wood-burning stove in the living space. The exterior of each house will be accented in our Estate colour, 'Card Room Green', with the GFG flame logo featuring in a stone plaque built into the front elevation of each property.

House plots on the Estate will be brought forward for planning consent in phases depending on site complexity and constraints, with the initial phase of relatively straightforward sites beginning the consent process in the second half of 2021.

Our aim is to provide a mix of tenure options to meet the needs of local people and our business, including houses for staff, for private residential tenancies (open-market and affordable) and for guest accommodation on those parts of the Estate where we currently have no provision.





Dreathan Donn
WREN

1 Bedroom Bothy

‘Dreathan Donn’ is a one bedroom bothy-style property with an open-plan living space, separate shower room and mezzanine first floor double bedroom.

Ideal as a starter home, for single-person households or those downsizing from a family home, this design is flexible and comfortable.

‘Dreathan Donn’ is designed to stand alone as a detached property, or to link with the other two designs in our portfolio.

We can also change door and window configurations on a site-by-site basis to make the most of the spectacular views across JAHAMA Highland Estates.



Images are illustrative only.
Architectural plans and drawings
are created on a site-by-site basis.
Not for reproduction.



Guilbneach
CURLEW

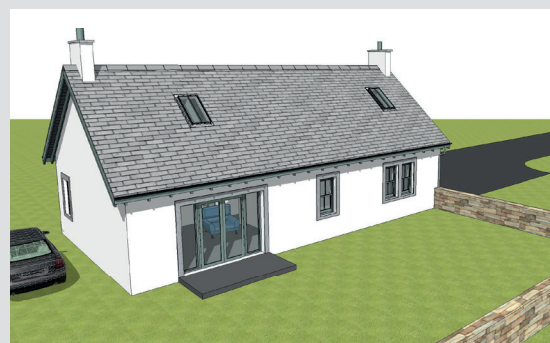
2 Bedroom Bungalow

‘Guilbneach’ is our middle-sized home, being a bungalow with an open plan living space, separate bathroom, utility room and two double bedrooms.

With single-floor living, this house style is suitable for a range of needs and has been designed with flexibility in mind.

‘Guilbneach’ is designed to stand alone as a detached property, or to link with the other two designs in our portfolio.

We can also change door and window configurations on a site-by-site basis to make the most of the spectacular views across JAHAMA Highland Estates.



Images are illustrative only.
Architectural plans and drawings
are created on a site-by-site basis.
Not for reproduction.



Iolaire
EAGLE

3 Bedroom House

‘Iolaire’ is the largest house in our portfolio. A family home with a kitchen-dining room, separate living room, utility room, downstairs WC and shower room, and three double bedrooms and a bathroom upstairs.

With accommodation over two floors, this property is ideal for families or those with more need for additional space.

‘Iolaire’ makes a fine detached home, but has been designed to link with the other two designs in our portfolio on a site-specific basis.

And, just as with ‘Dreathann Donn’ and ‘Guilbneach’, we can change door and window configurations to suit the location, in order to make the most of the spectacular views across JAHAMA Highland Estates.



Images are illustrative only.
Architectural plans and drawings
are created on a site-by-site basis.
Not for reproduction.

FOR FURTHER INFORMATION
PLEASE CONTACT JAHAMA HIGHLAND ESTATES



Lochaber Smelter | North Road | Fort William | PH33 6TH

Email: highland@jahamaestates.com

www.jahamahighlandestates.com

With thanks to
Colin Armstrong
Architects of Inverness